

Gallery of Pantocrators & Mandylions+2002 Durante positive photograph of the Shroud face (taken from Shroud Scope)+ Vignon marks (taken from shroudstory.com)

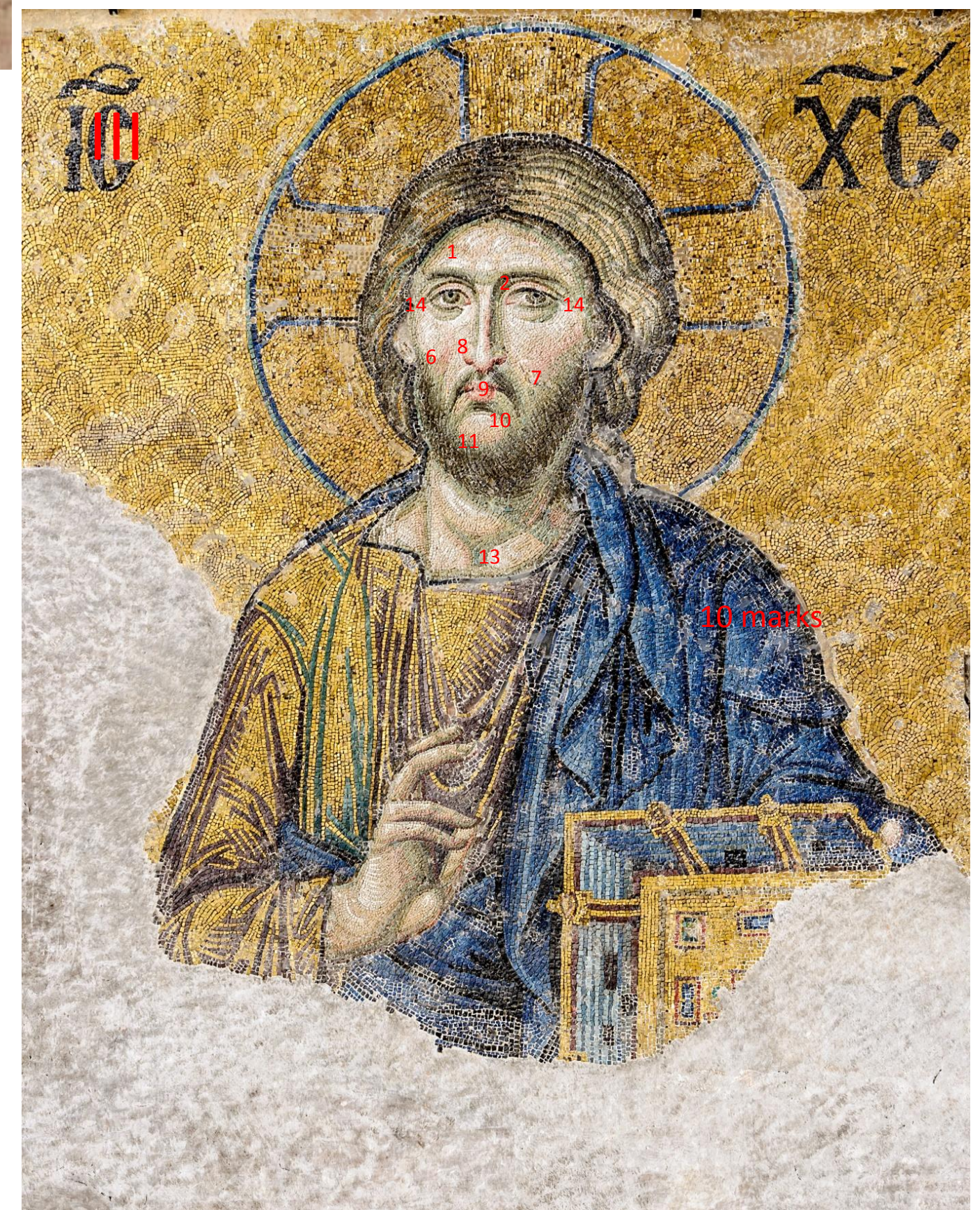
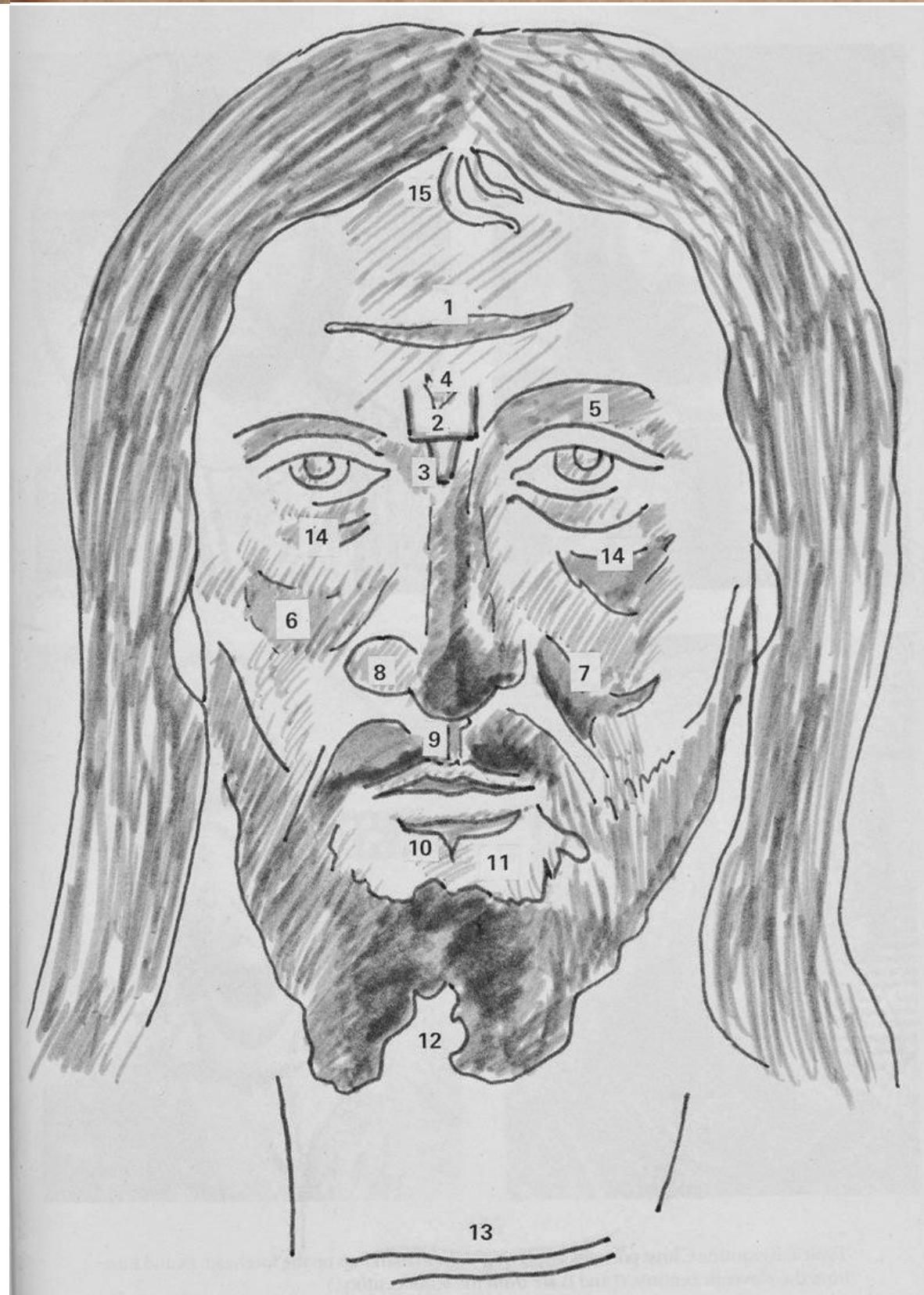
- The gallery uses Wikimedia Commons resources :
[http://commons.wikimedia.org/wiki/Christ Pantocrator](http://commons.wikimedia.org/wiki/Christ_Pantocrator) &
[http://commons.wikimedia.org/wiki/Category:Mandylion icons](http://commons.wikimedia.org/wiki/Category:Mandylion_icons)

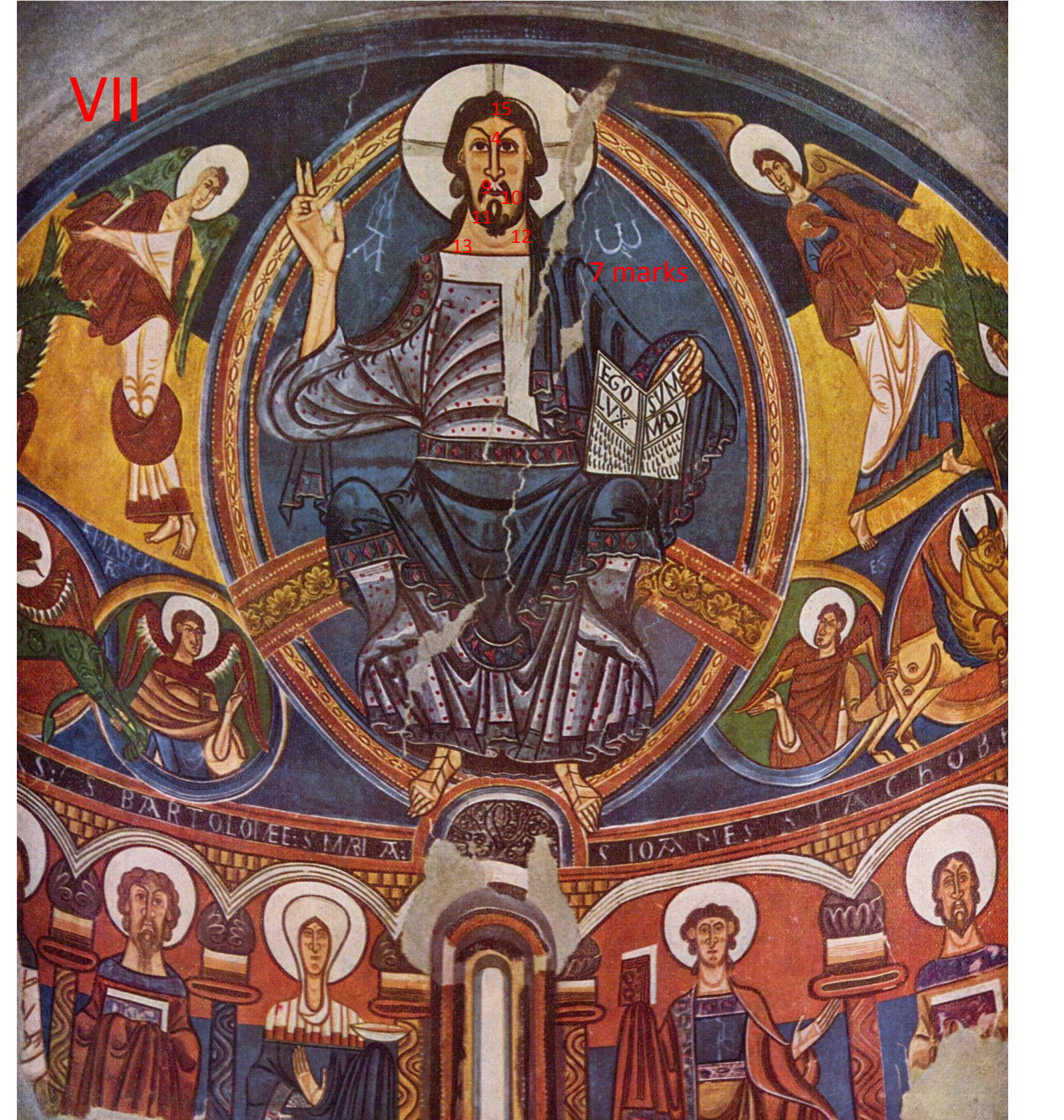
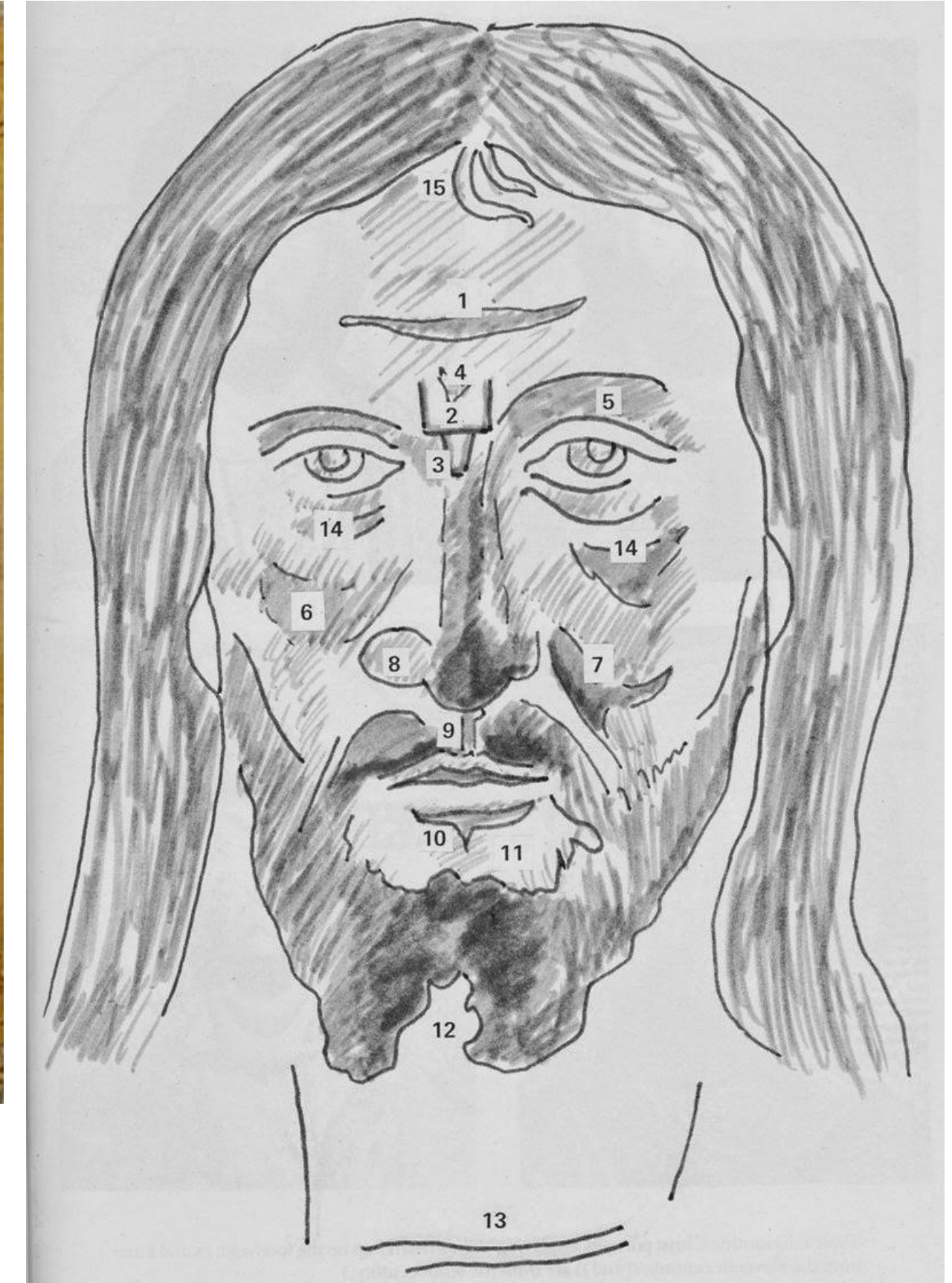
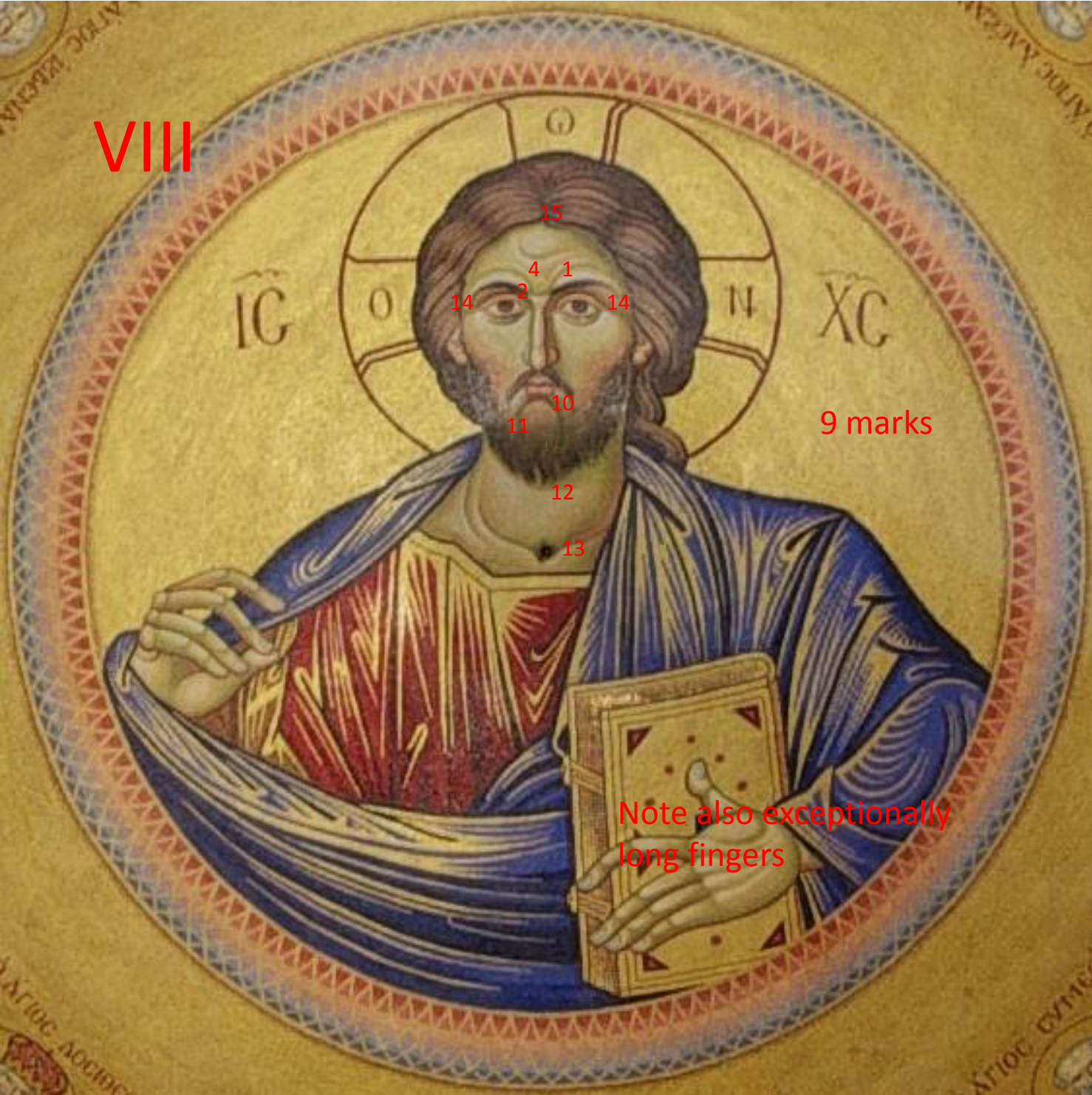
- *Wilson lists the markings claimed by Vignon as: Vignon Markings: 1) streak across forehead; 2) open square between brows; 3) 'V' shape at bridge of nose; 4) second 'V' within 2; 5) raised right eyebrow; 6) & 7) accentuated left & right cheeks; 8) enlarged left nostril; 9) accented line between nose & lower lip; 10) heavy line under lower lip; 11) hairless area between lower lip & beard; 12) forked beard; 13) transverse line across throat; 14) heavily accented owlsh eyes; 15) Two strands of hair at forehead. (daveb of wellington nz)*

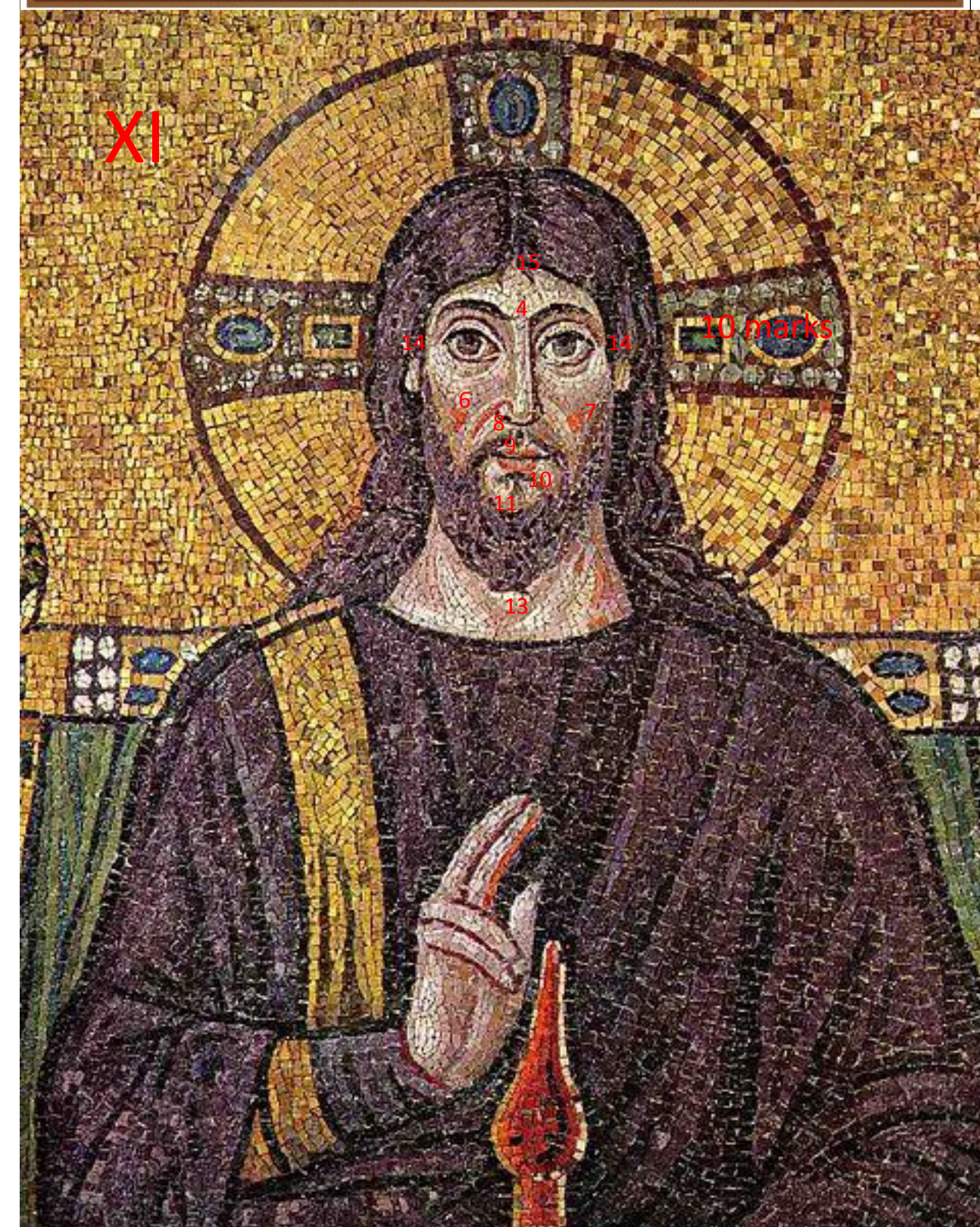
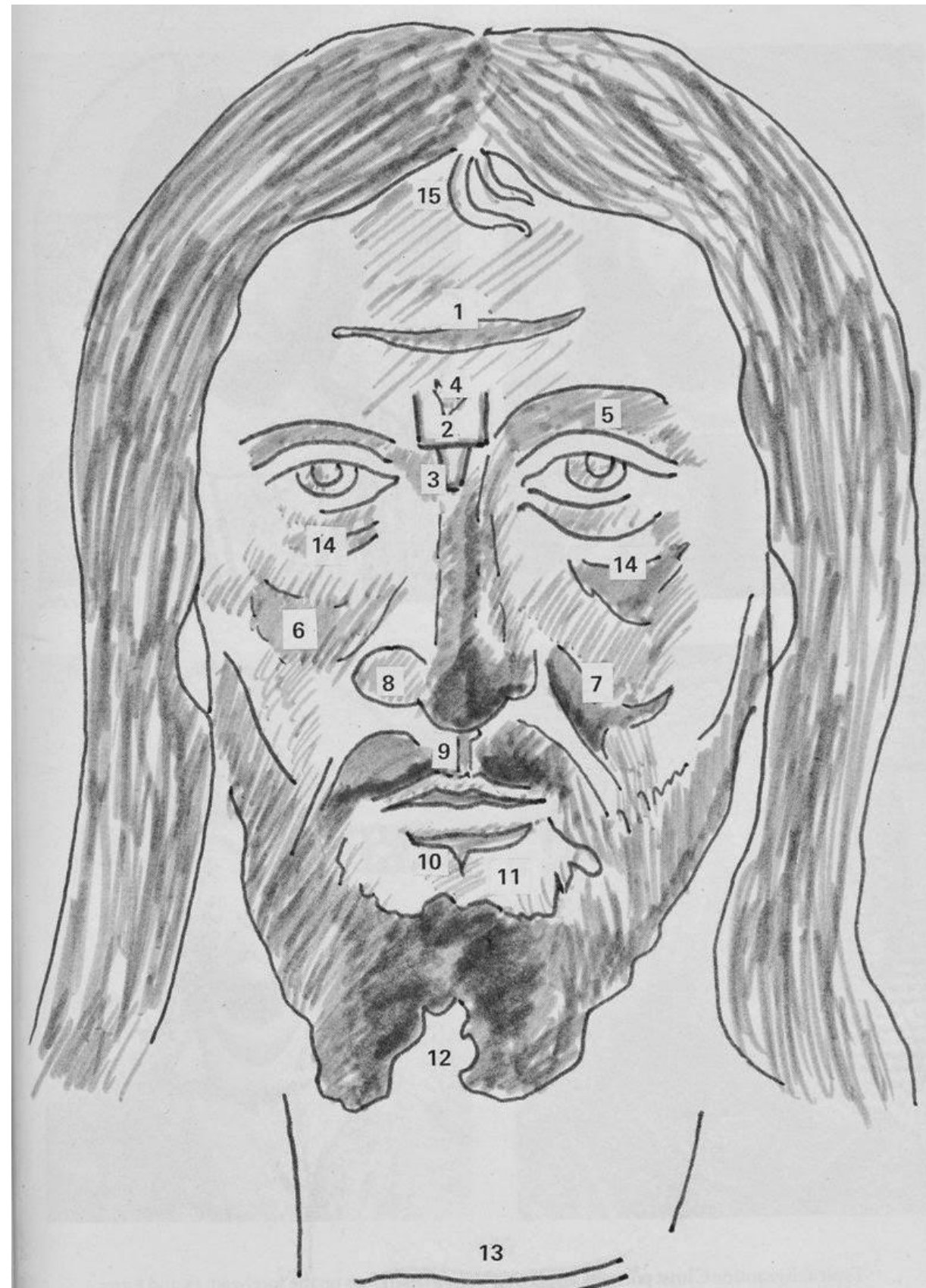
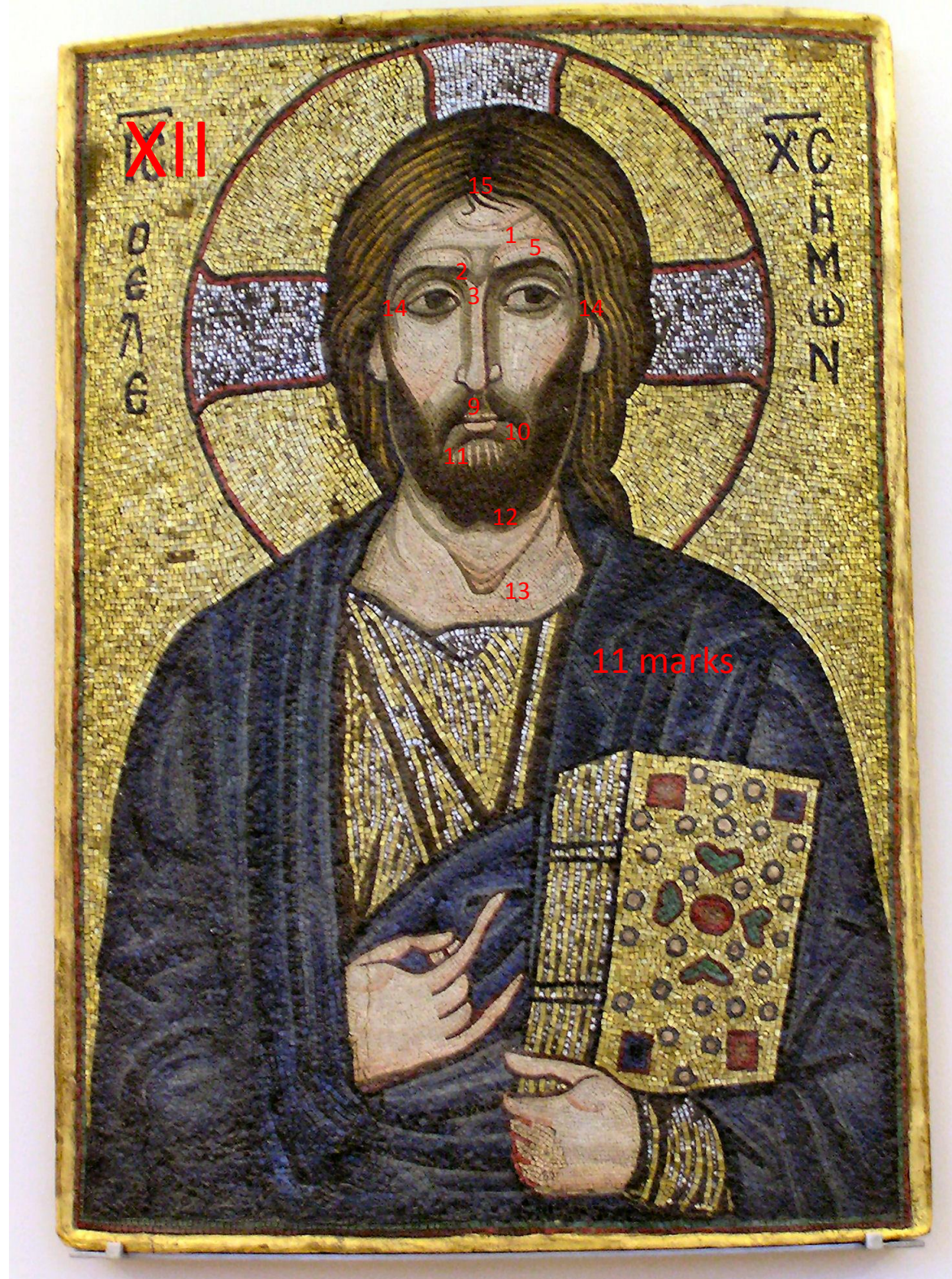
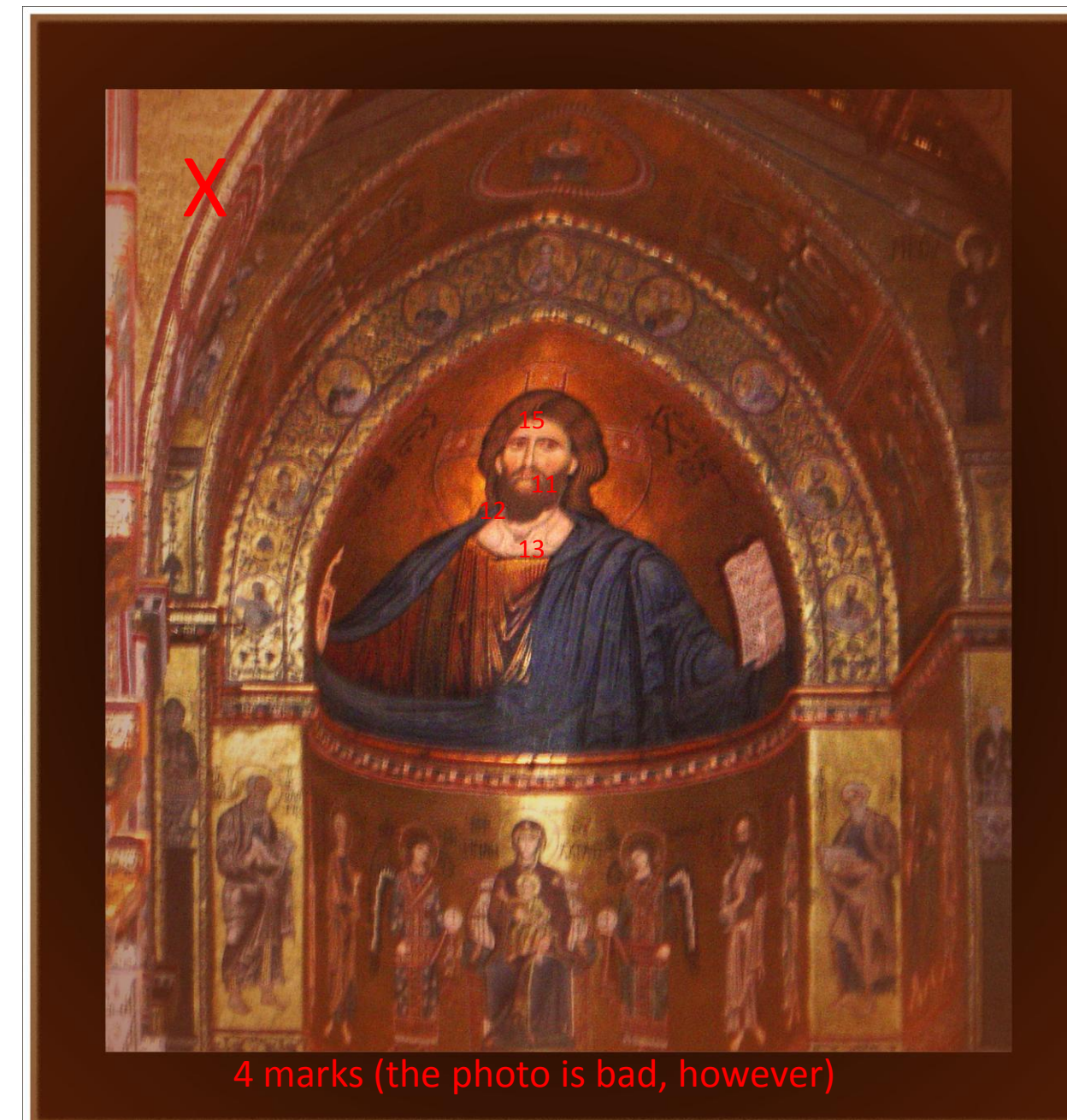
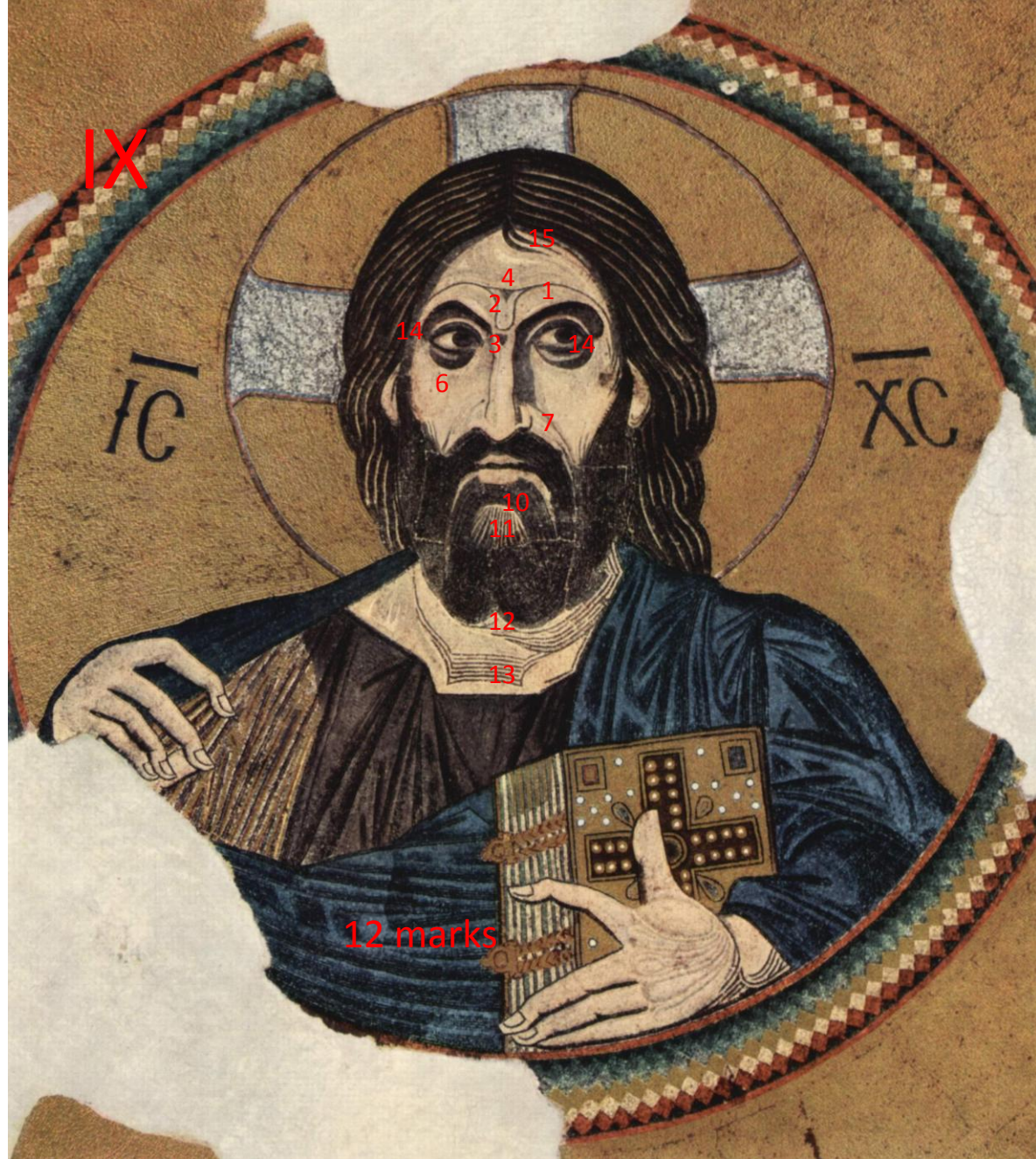
No. of icon	Description
I	The Empress Zoe mosaics (11th-century) in Hagia Sophia
II	Christus Pantocrator in the apsis of the cathedral of Cefalù.
III	From Hagia Sophia , Istanbul. Deisis mosaic (detail). 1280
IV	Mosaic in the Baptistry of San Giovanni of Florence, ca. 1300, by the Florentine Master
V	From Dunkle Kirche
VI	Pammacaristos Church in Istanbul.
VII	Fresco c. 1220 from the Apse of Saint Clement's, painted by the Master of Tahull, currently at the Museu Nacional d'Art de Catalunya .
VIII	Christ Pantocrator in the Church of the Holy Sepulchre, Jerusalem

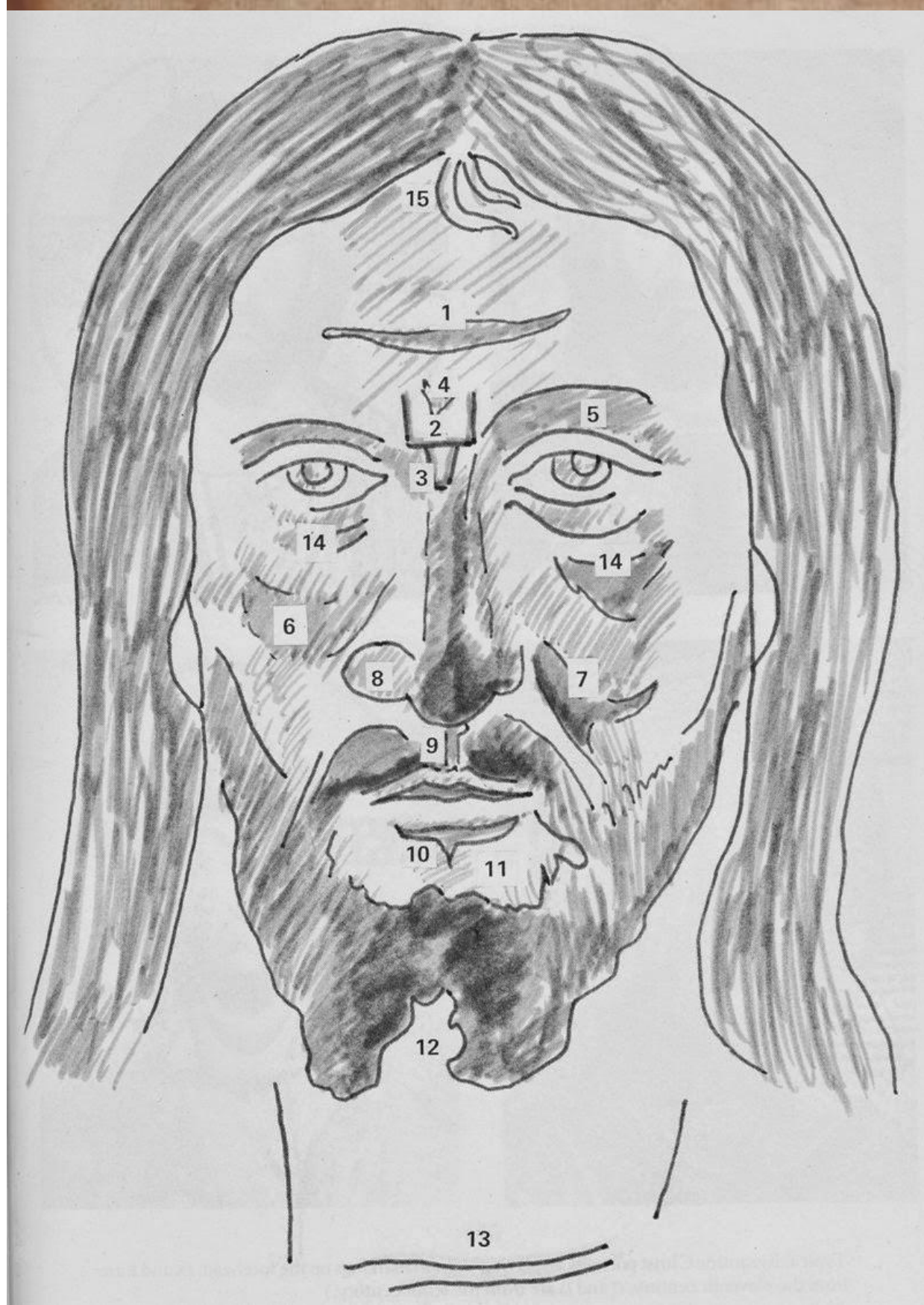
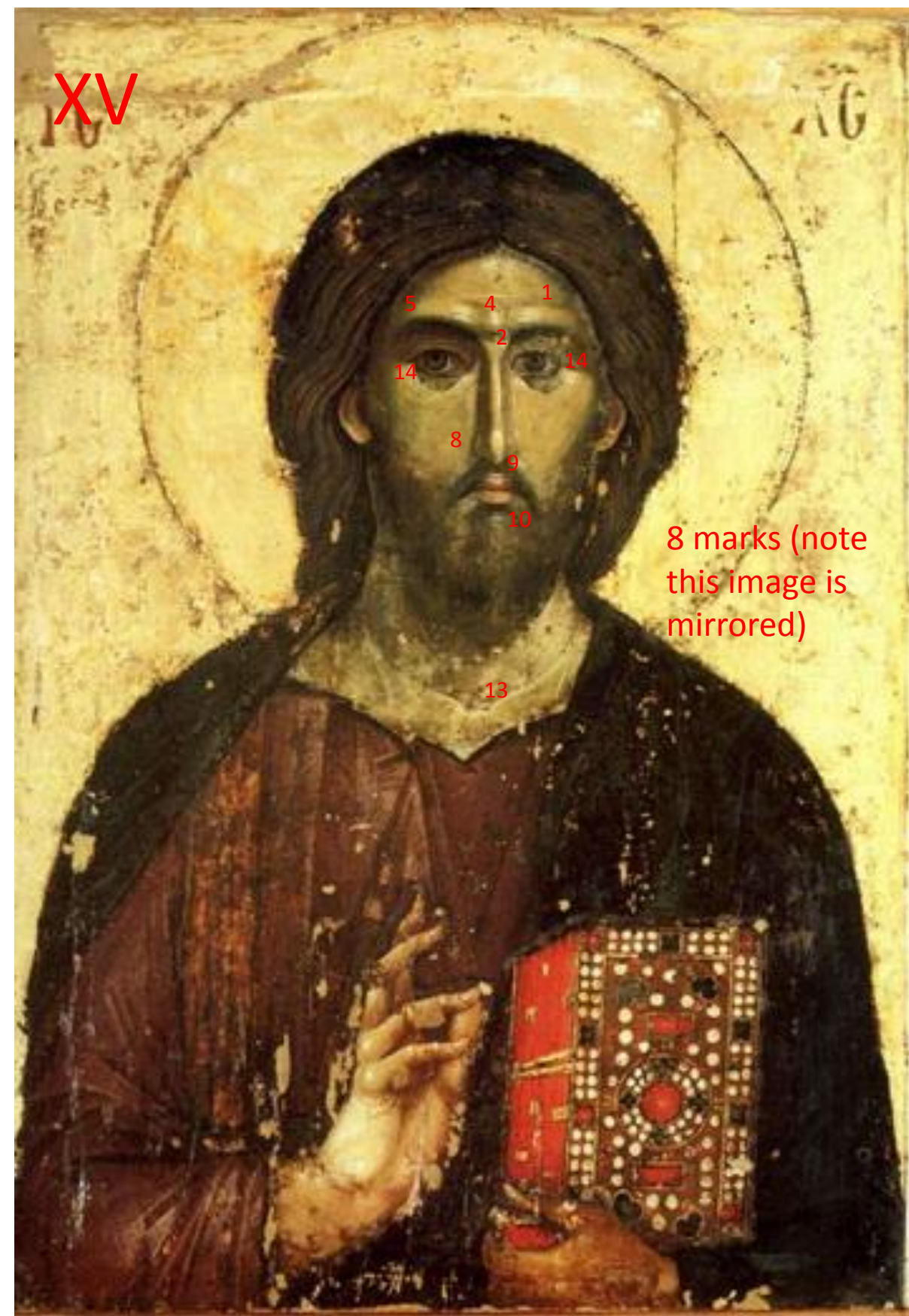
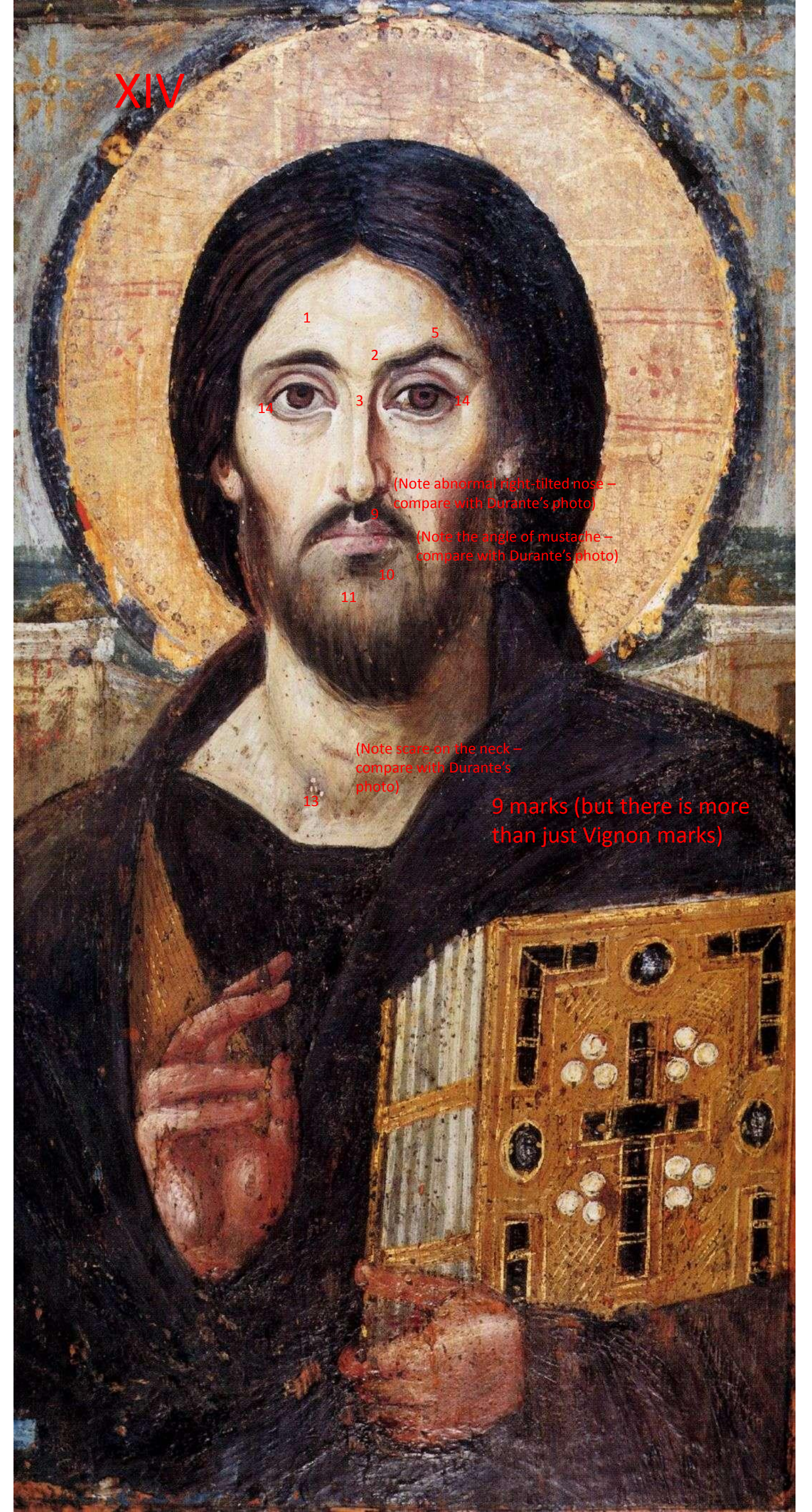
No. of icon	Description
IX	Mosaic from Daphne, Greece, ca. 1080-1100
X	Byzantine mosaic in the Cathedral of Montreale, Palermo, Sicil
XI	Ravenna, Italy, Church San Apollinare Nuovo, Jesus Christ (mosaic from the 6th century, detail)
XII	Mosaic icon from the Bodemuseum, Berlin. (1100-1150)
XIII	Mosaic in Hagia Sophia of Christ Pantocrator and Leon VI.
XIV	Encaustic painting on panel, St. Catherine's Monastery, Sinai, 6th-7th century.
XV	13th century icon. From Serbian monastery Chilandar, Agios Oros

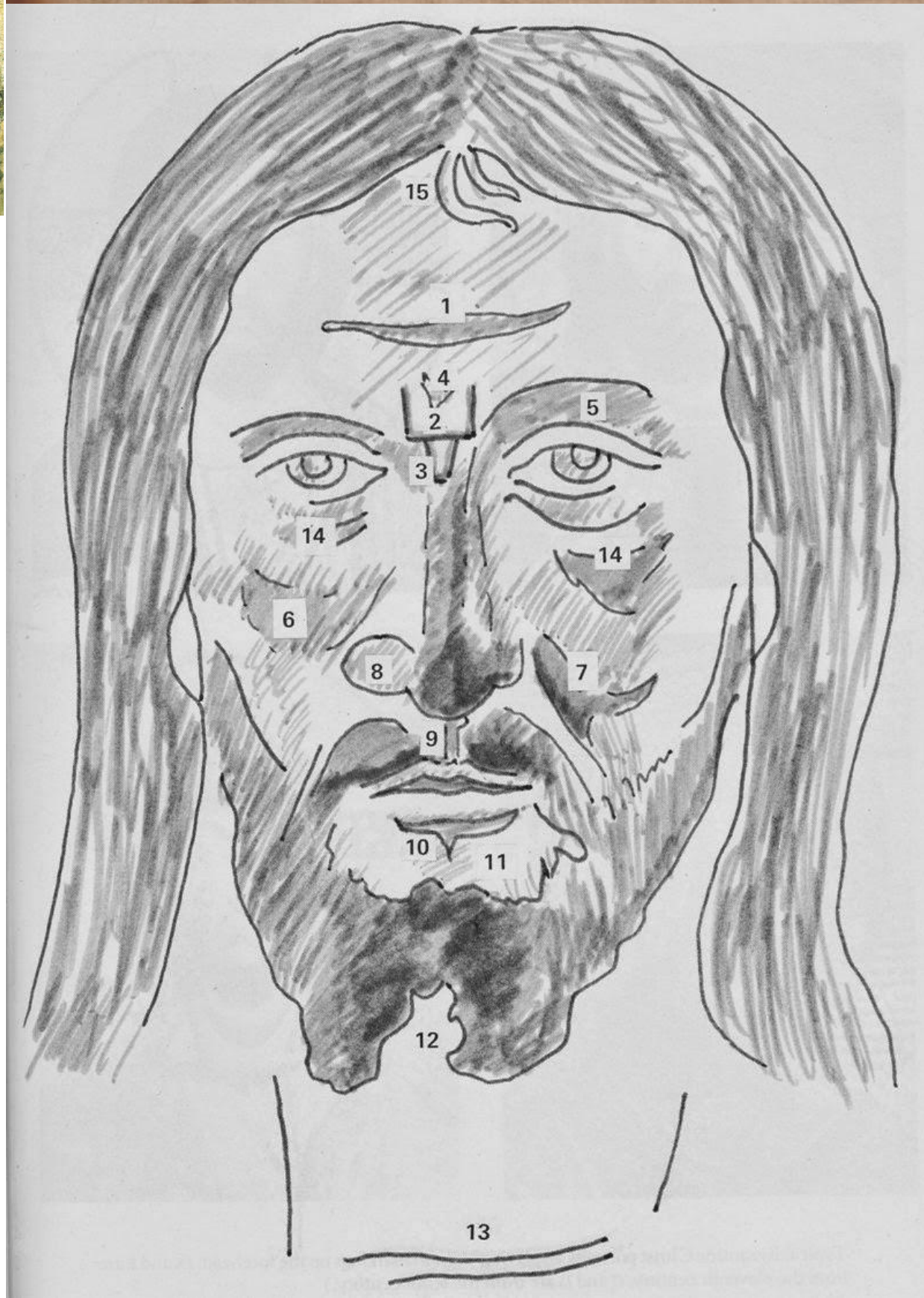
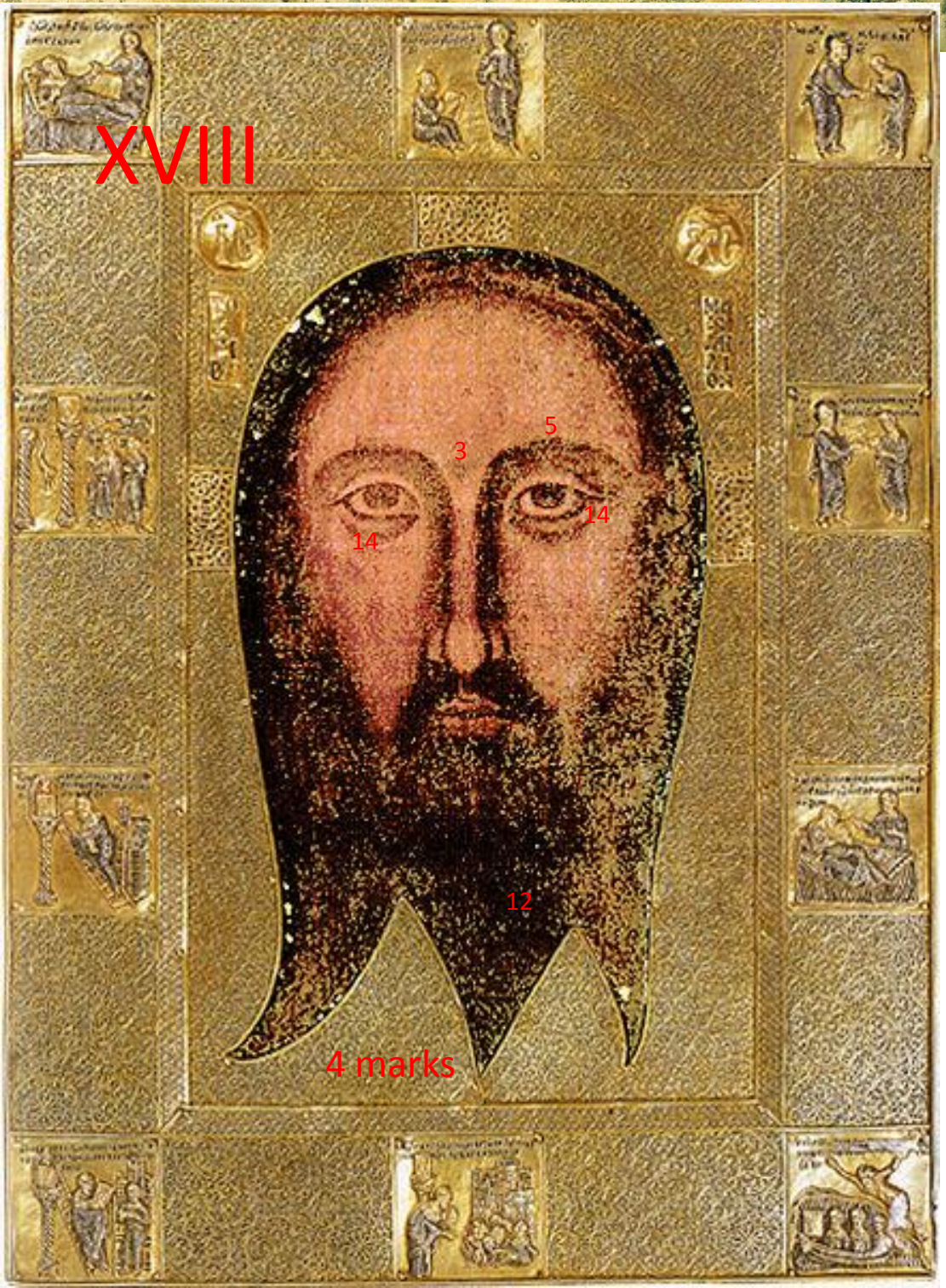
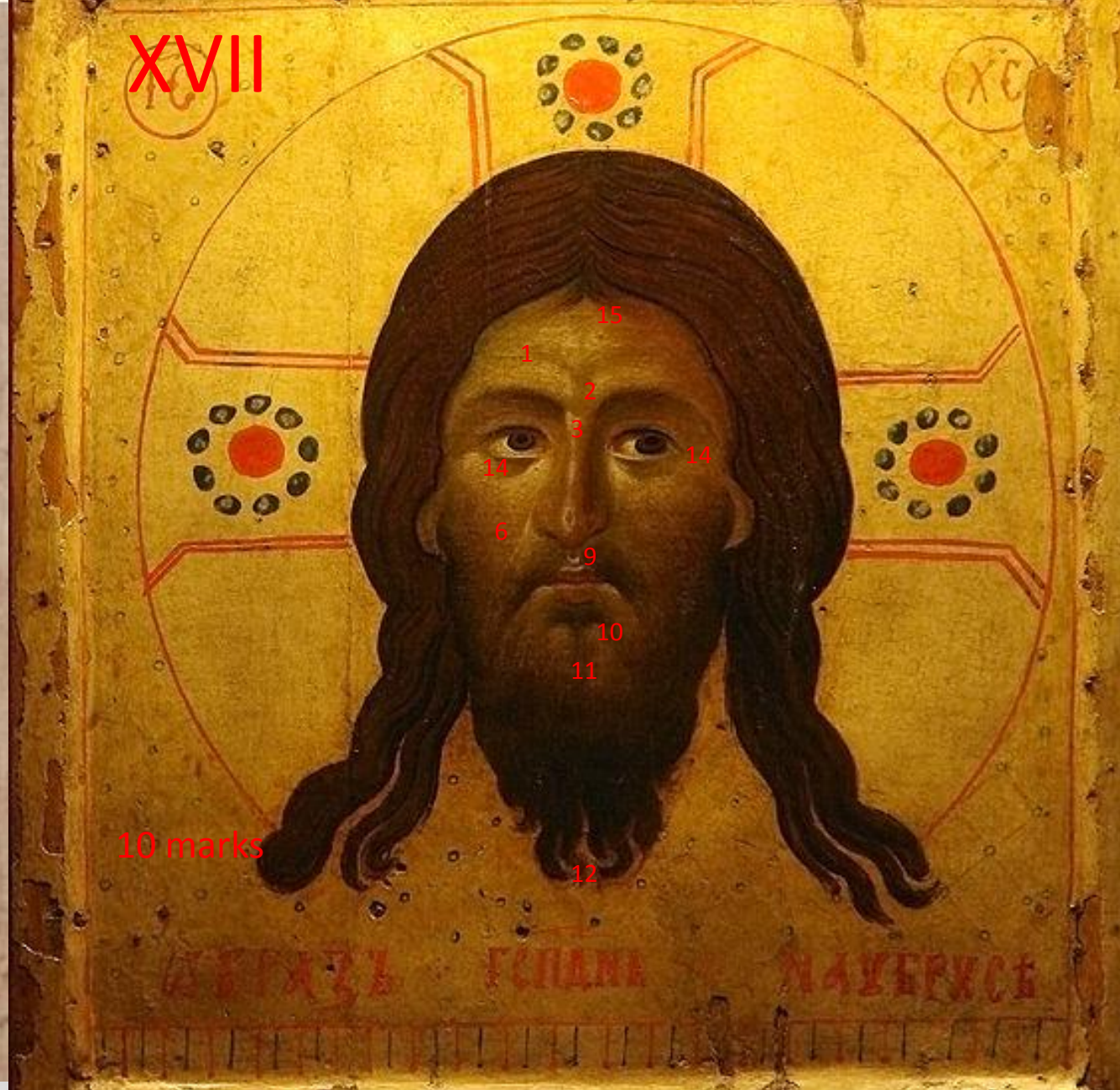
No. of icon	Description
XVI	Spas nerukot, 1216, Tretyakov Gallery, Moscow
XVII	Holy Face of Leon
XVIII	The Holy Face perserved in the Church of St Bartholemew of the Armenians, Genoa
XIX	Mandylion of Edessa from the private chapel of the pope in the Vatican
XX	A 12th-century Novgorod icon from the Assumption Cathedral in the Moscow Kremlin











No. of mark	No. of occurences
1	13/20
2	8/20
3	11/20
4	10/20
5	7/20
6	8/20
7	6/20
8	7/20
9	15/20
10	19/20
11	19/20
12	15/20
13	15/20
14	17/20
15	14/20